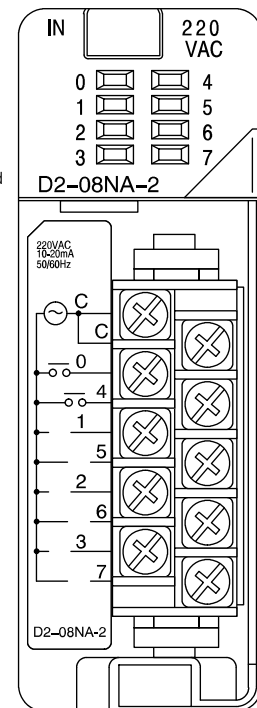
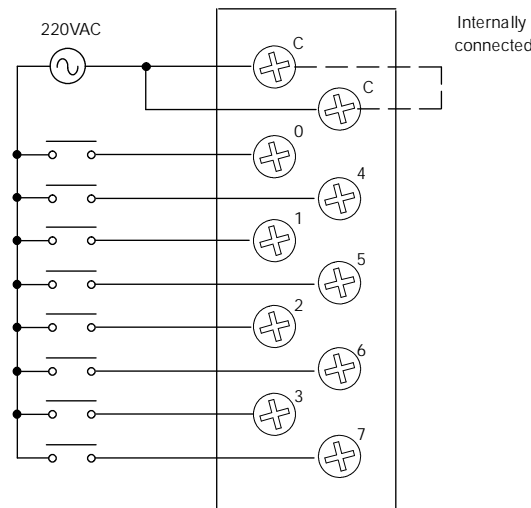
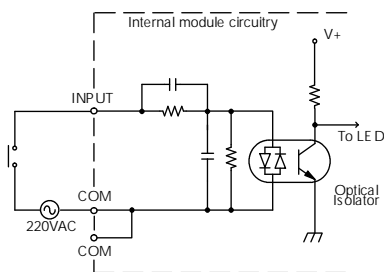
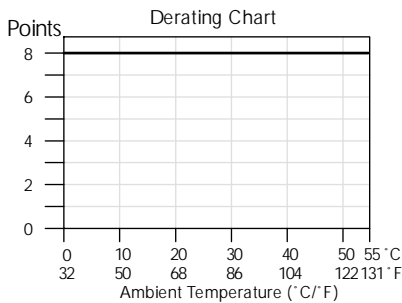


AC Input Modules

D2-08NA-2 AC Input	
Inputs per Module	8
Commons per Module	1 (2 I/O terminal points)
Input Voltage Range	170-265 VAC
Peak Voltage	265 VAC
ON Voltage Level	150 VAC minimum
OFF Voltage Level	40 VAC maximum
AC Frequency	47-63 Hz
Input Impedance	18 kΩ @ 60 Hz
Input Current	9mA @ 220 VAC, 50 Hz 11 mA @ 265 VAC, 50 Hz 10 mA @ 220 VAC, 60 Hz 12 mA @ 265 VAC, 60 Hz
Minimum ON Current	10 mA
Maximum OFF Current	2 mA
Base Power Required 5VDC	100 mA
OFF to ON Response	5 to 30 ms
ON to OFF Response	10 to 50 ms
Terminal Type (included)	Removable; D2-8IOCON
Status Indicator	Logic side
Weight	2.5 oz. (70 g)

Operating Temperature	32°F to 131°F (0° to 55°C)
Storage Temperature	-4°F to 158°F (-20°C to 70°C)
Humidity	35% to 95% (non-condensing)
Atmosphere	No corrosive gases permitted
Vibration	MIL STD 810C 514.2
Shock	MIL STD 810C 516.2
Insulation Withstand Voltage	1,500 VAC 1 minute (COM-GND)
Insulation Resistance	10M ≈ 500 VDC
Noise Immunity	NEMA 1,500V 1 minute SANKI 1,000V 1 minute
RFI	150 MHz, 430 MHz



- PLC Overview
- DL05/06 PLC
- DL105 PLC
- DL205 PLC**
- DL305 PLC
- DL405 PLC
- Field I/O
- Software
- C-more HMIs
- Other HMI
- AC Drives
- Motors
- Steppers/Servos
- Motor Controls
- Proximity Sensors
- Photo Sensors
- Limit Switches
- Encoders
- Current Sensors
- Pushbuttons/Lights
- Process
- Relays/Timers
- Comm.
- TB's & Wiring
- Power
- Circuit Protection
- Enclosures
- Appendix
- Part Index