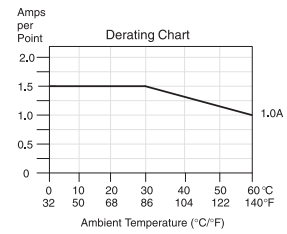
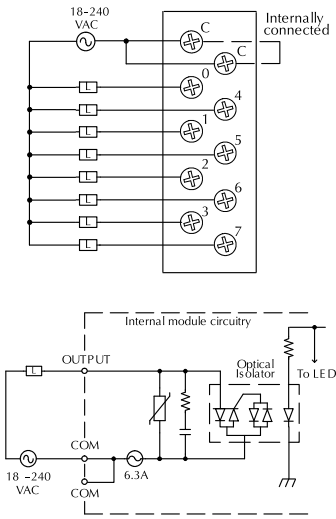
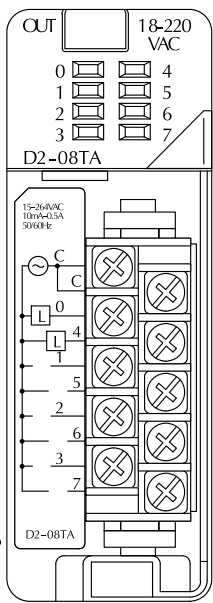
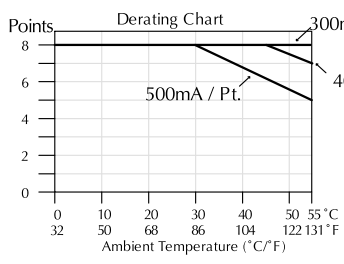


# AC Output Modules

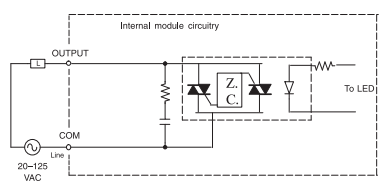
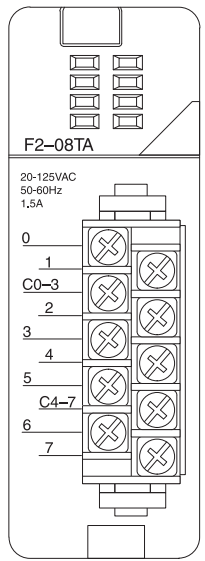
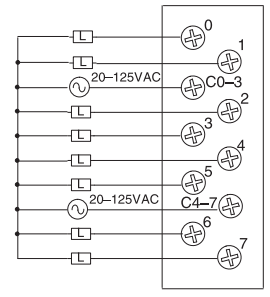
D2-08TA AC Output	
<b>Outputs per Module</b>	8
<b>Commons per Module</b>	1 (2 I/O terminal points)
<b>Output Type</b>	SSR (Triac)
<b>Operating Voltage</b>	15-264 VAC
<b>Peak Voltage</b>	264 VAC
<b>ON Voltage Drop</b>	< 1.5 VAC (>0.1A) < 3.0 VAC (<0.1A)
<b>AC Frequency</b>	47 to 63 Hz
<b>Minimum Load Current</b>	10 mA
<b>Max Load Current</b>	0.5A/point; 4A/common
<b>Max Leakage Current</b>	4mA (264 VAC, 60 Hz) 1.2 mA (100 VAC, 60 Hz) 0.9 mA (100 VAC, 50 Hz)
<b>Max Inrush Current</b>	10 mA for 10 ms
<b>Base Power Required 5VDC</b>	250 mA
<b>OFF to ON Response</b>	1ms
<b>ON to OFF Response</b>	1ms + 1/2 cycle
<b>Terminal Type (included)</b>	Removable; D2-8IOCON
<b>Status Indicator</b>	Logic side
<b>Weight</b>	2.8 oz. (80g)
<b>Fuses</b>	1 per common, 6.3A slow blow replaceable order D2-fuse-3

F2-08TA AC Output	
<b>Outputs per Module</b>	8
<b>Commons per Module</b>	2 (Isolated)
<b>Output Type</b>	SSR (Triac with zero crossover)
<b>Operating Voltage</b>	24-140 VAC
<b>Peak Voltage</b>	140 VAC
<b>ON Voltage Drop</b>	1.6 V(rms) @ 1.5A
<b>AC Frequency</b>	47 to 63 Hz
<b>Minimum Load Current</b>	50 mA
<b>Max Load Current</b>	1.5A / pt @ 30°C 1.0A / pt @ 60°C 4.0A / common; 8.0A / module @ 60°C
<b>Max Leakage Current</b>	0.7 mA(rms)
<b>Peak One Cycle Surge Current</b>	15A
<b>Base Power Required 5VDC</b>	250 mA
<b>OFF to ON Response</b>	0.5 ms - 1/2 cycle
<b>ON to OFF Response</b>	0.5 ms - 1/2 cycle
<b>Terminal Type (included)</b>	Removable; D2-8IOCON
<b>Status Indicator</b>	Logic side
<b>Weight</b>	3.5 oz.
<b>Fuses</b>	None

See the Terminal Blocks and Wiring section for part numbers of ZIPLink cables and terminal blocks compatible with this module.



Derating Note: All outputs can be run at the current per point shown.



- PLC Overview
- DL05/06 PLC
- DL105 PLC
- DL205 PLC**
- DL305 PLC
- DL405 PLC
- Field I/O
- Software
- C-more HMIs
- Other HMI
- AC Drives
- Motors
- Steppers/Servos
- Motor Controls
- Proximity Sensors
- Photo Sensors
- Limit Switches
- Encoders
- Current Sensors
- Pushbuttons/Lights
- Process
- Relays/Timers
- Comm.
- TB's & Wiring
- Power
- Circuit Protection
- Enclosures
- Appendix
- Part Index