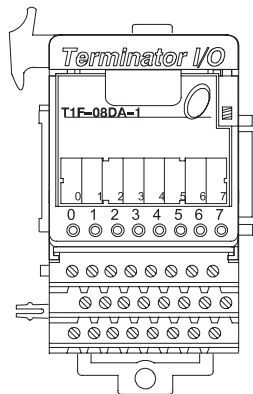


Analog Current Output Module

T1F-08DA-1

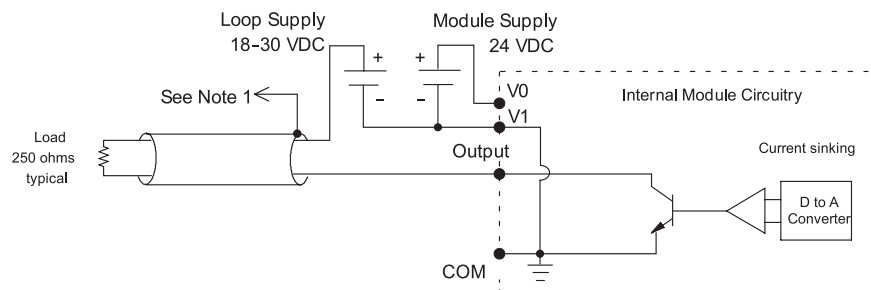
8-channel analog current output module

The 8-channel current output module uses a T1K-08B or T1K-08B-1 base, which is purchased separately.



T1F-08DA-1 Analog Output Specification	
Channels Per Module	8
Output Ranges	0-20 mA, 4-20 mA
Output Type	Single-ended, 1 common
Resolution	12 bit (1 in 4096)
Max. Loop Supply	30 VDC
Peak Output Voltage	30 VDC
Load Impedance	0Ω min.
Max. Load (ohm) / Power Supply	620/18 V, 910/24 V, 1200/30 V
Min. Load (ohm) / Power Supply	0/24 V, 350/30 V @ 40°C 250/24V, 600/30 V @ 60°C
Linearity Error (end to end)	± 2 counts max. ± 0.05% of full scale max.
Conversion Settling Time	400 μs max. full scale change
Full Scale Calibration Error	± 12 counts max.
Offset Calibration Error	0-20 mA: ± 6 counts max. 4-20 mA: ± 6 counts max.
Accuracy vs. Temperature	± 50 ppm/°C full scale calibration change
Max. Full Scale Inaccuracy (% of full scale); all errors included	0.2% @ 25°C 0.4% @ 60°C
Master Update Rate	8 channels per scan max.
Output Points Required	256 discrete pts. or 8 Dwords (32-bit words) (network interface dependent)
Base Power Required	75 mA @ 5 VDC
External Module Power Required	21.6-26.4 VDC, 150 mA, class 2
Weight	145 g

Equivalent Output Circuit



NOTES:

- 1: Shields should be connected to the 0V terminal of the module or the 0V of the power supply.
- 2: Unused current outputs should remain open (no connections) for minimum power consumption.

PLC Overview

DL05/06 PLC

DL105 PLC

DL205 PLC

DL305 PLC

DL405 PLC

Field I/O

Software

C-more HMIs

Other HMI

AC Drives

Motors

Steppers/Servos

Motor Controls

Proximity Sensors

Photo Sensors

Limit Switches

Encoders

Pushbuttons/Lights

Process

Relays/Timers

Comm.

TB's & Wiring

Power

Enclosures

Appendix

Part Index