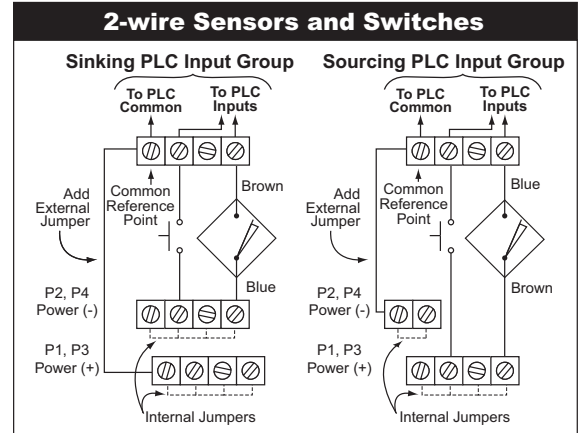
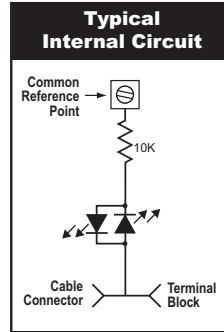
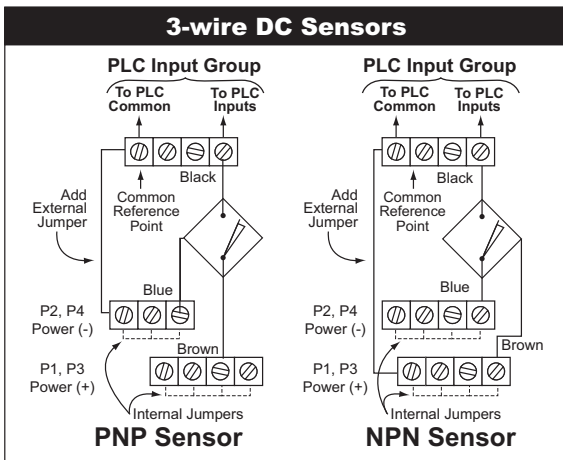
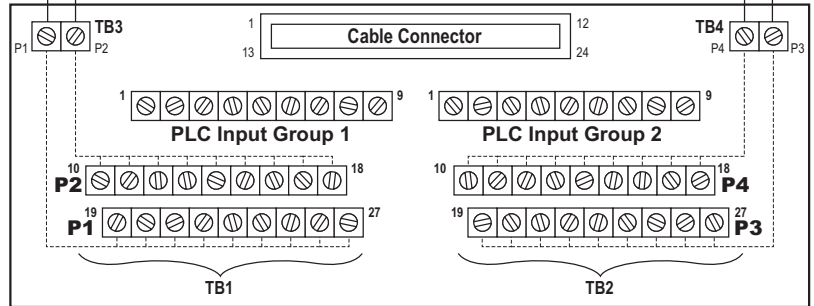
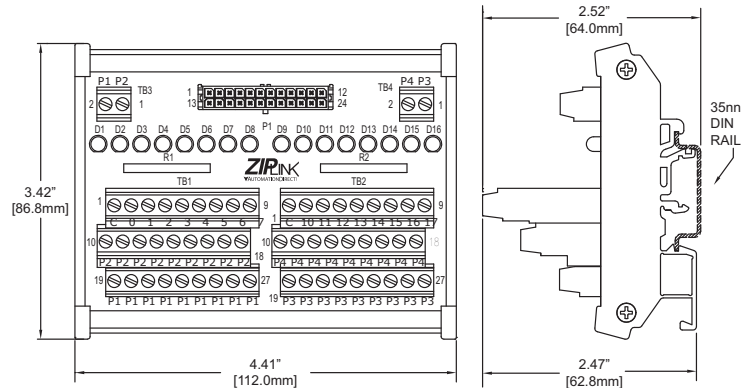


WARNING: We recommend installing up to a 4 Amp fast-blow fuse such as AGC4 or similar in series with the power supply as an extra safety measure.

*For power requirements, see the Voltage Range listed in the PLC I/O chart below.



| Programmable Controller Comparison Table | | | |
|--|------------|------------------|--------------------------------------|
| Family | I/O Module | Voltage Range | Max Input Current Per Point (mA) |
| 05/06 | D0-16ND3 | 20-28VDC | 4mA @ 24VDC |
| 205 | D2-16ND3-2 | 20-28VDC | 6mA @ 24VDC |
| 305 | D3-16NE3 | 4-30VDC/VAC | 16mA @ 24VDC |
| 405 | D4-16ND2 | 0.2-26.4VDC | 3.8mA @ 12VDC, 8.3mA @ 24VDC |
| | D4-16ND2F | 10.2-26.4VDC | 3.8mA @ 12VDC, 8.3mA @ 24VDC |
| | D4-16NE3 | 10.2-26.4VDC/VAC | 3.8mA @ 12VAC/VDC, 8.3mA @ 24VAC/VDC |
| CLICK | C0-16ND3 | 24VDC | 4mA @ 24VDC |



| Specifications | |
|--|--|
| Description* | 16-point, 24 volt Sensor Input Module with LEDs |
| Maximum Voltage | 50VAC/VDC (-10%/+20%) |
| UL Voltage Range** | 0-30VAC/VDC (-10%/+20%) |
| Nominal Current per Input | I/O module max. input current per point plus 2mA for LED indicator |
| Maximum Current per Input | 500mA |
| Maximum Current per Power Group (P1, P2, P3, or P4) | 4A |
| Surrounding Temperature Range | 32 to 140°F (0 to 60°C) |
| Approvals | File # E200031 UL, cUL, Class 1, Division 2, Groups A,B,C,D Hazardous Locations, CE, EN 61131-2:2007 |
| LED Indicator Circuit | 2mA @ 24VDC |
| Terminal Block Contacts | Copper alloy, tin-lead plated |
| Wire Range (Rated Cross Section)** | 12-24AWG Solid or Stranded Copper Conductor (2.5mm ²) |
| Wire Strip Length | 0.24-0.27" (6-7mm) |
| Screw Torque | 4.4 in-lbs (0.5 Nm) |
| Connector Type | Molex Micro-Fit 3.0, 24 pin connector Example: Receptacle 43020-2400 Pins 43031 Series, Male |
| Dimensions (WxHxD) | 4.41" x 3.42" x 2.47" (112mm x 86.8mm x 62.8mm) |
| Cable/Wire Clearance | 0.5" (12.7mm) Required |
| Mounting Restrictions | None |

*Connecting cables are for internal wiring only.

**Use Class 2 power supply. Use conductors rated 60°/75°C.

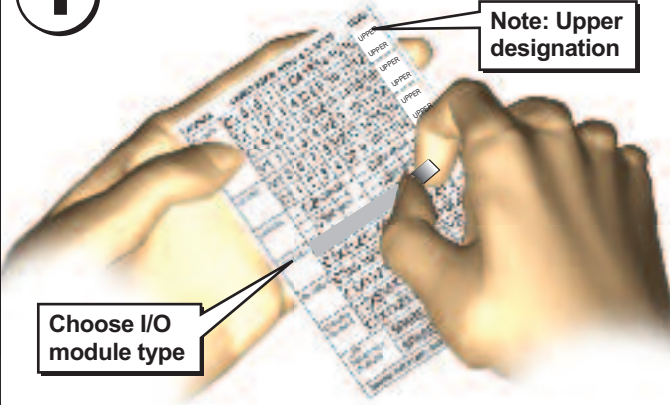


| Pin and Terminal Assignments | | | |
|------------------------------|------------|-------------------|------------|
| PLC Input Group 1 | | PLC Input Group 2 | |
| Connector Pin | Terminal | Connector Pin | Terminal |
| 1, 2, 13, 14 | 1 | 7, 8, 19, 20 | 1 |
| 3 | 2 | 9 | 2 |
| 4 | 3 | 10 | 3 |
| 5 | 4 | 11 | 4 |
| 6 | 5 | 12 | 5 |
| 15 | 6 | 21 | 6 |
| 16 | 7 | 22 | 7 |
| 17 | 8 | 23 | 8 |
| 18 | 9 | 24 | 9 |
| TB4 | TB1 | TB3 | TB2 |
| 1(P2) | 10 thru 18 | 1(P3) | 19 thru 27 |
| 2(P1) | 19 thru 27 | 2(P4) | 10 thru 18 |

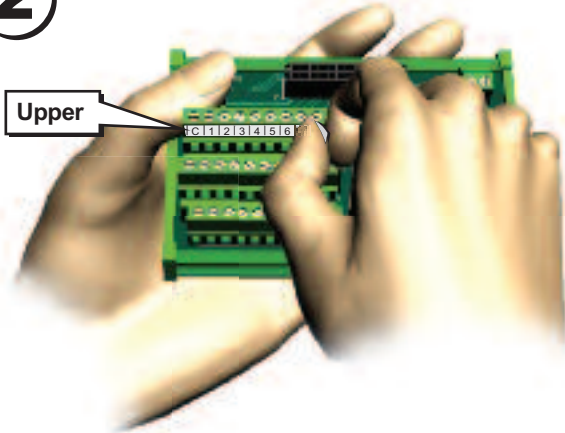
Apply ZIPLink Labels

(Supplied with the module)

1 Find correct label and remove from sheet

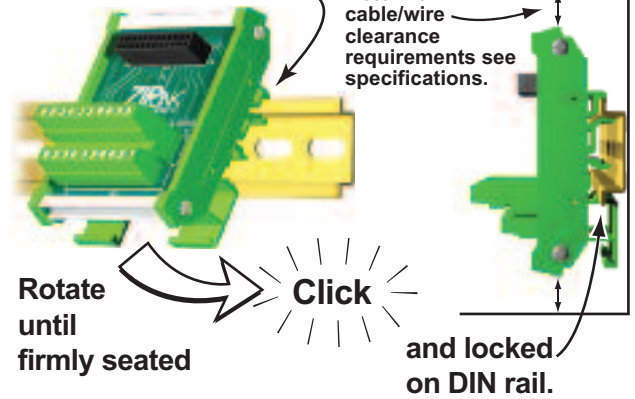


2 Apply label to designated position

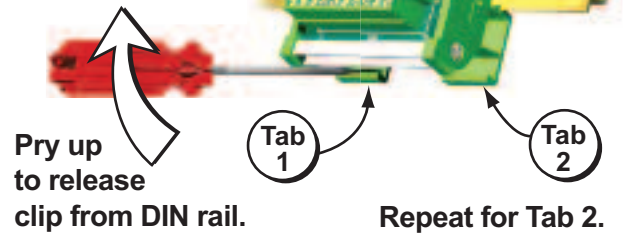


DIN Rail Installation and Removal

To install ZIPLink module, insert upper tab into DIN rail.



To remove ZIPLink module, insert screwdriver between Tab 1 and module.



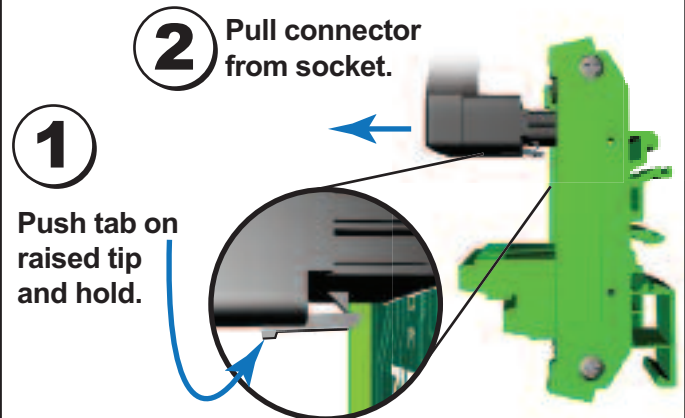
WARNING: To minimize the risk of potential safety problems, you should follow all applicable local and national codes that regulate the installation and operation of your equipment. These codes vary from area to area and it is your responsibility to determine which codes should be followed, and to verify that the equipment, installation, and operation are in compliance with the latest revision of these codes.

Equipment damage or serious injury to personnel can result from the failure to follow all applicable codes and standards. We do not guarantee the products described in this publication are suitable for your particular application, nor do we assume any responsibility for your product design, installation, or operation.

If you have any questions concerning the installation or operation of this equipment, or if you need additional information, please call Technical Support at 01737 824600.

This publication is based on information that was available at the time it was printed. At AutomationDirect.com® we constantly strive to improve our products and services, so we reserve the right to make changes to the products and/or publications at any time without notice and without any obligation. This publication may also discuss features that may not be available in certain revisions of the product.

ZIPLink Cable Removal



HAZARD WARNING

A. THIS EQUIPMENT IS SUITABLE FOR USE IN CLASS I, DIVISION 2/ZONE 2, GROUPS A, B, C AND D OR NON-HAZARDOUS LOCATIONS ONLY.

B. **WARNING – EXPLOSION HAZARD** – SUBSTITUTION OF COMPONENTS MAY IMPAIR SUITABILITY FOR CLASS I, DIVISION 2/ZONE 2.

C. **WARNING – EXPLOSION HAZARD** – DO NOT CONNECT OR DISCONNECT CONNECTORS OR OPERATE SWITCHES WHILE CIRCUIT IS LIVE UNLESS THE AREA IS KNOWN TO BE NON-HAZARDOUS.

D. ALL MODULES USED WITH ACCESSORIES MUST USE R/C (ECB2) MATING PLUG FOR ALL APPLICABLE MODELS. ALL MATING PLUGS SHALL HAVE SUITABLE RATINGS FOR DEVICE.

11/21/2008 Document # ZL-LTB16-24 Rev2