

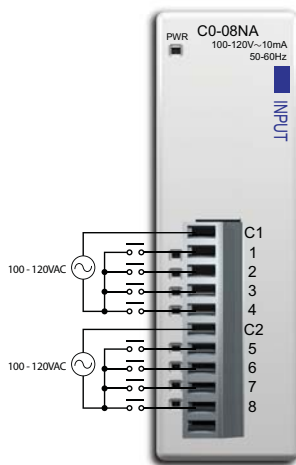
CLICK I/O Module Specifications

C0-08NA

8-Point AC Input Module

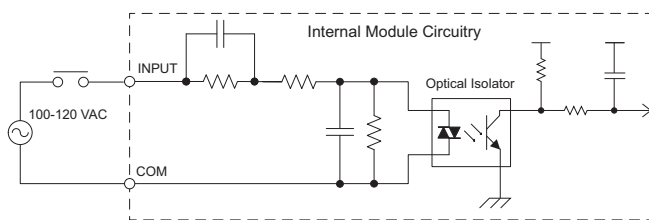
8-pt 100-120 VAC input module, 2 commons, isolated, removable terminal block included (replacement ADC p/n C0-08TB).

Wiring Diagram

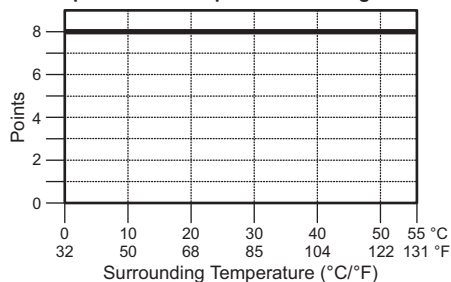


C0-08NA Input Specifications	
Inputs per Module	8
Operating Voltage Range	100-120 VAC
Input Voltage Range	80-144 VAC
AC Frequency	47-63 Hz
Input Current	Typ 8.5 mA @ 100 VAC (50Hz) Typ 10 mA @ 100 VAC (60Hz)
Maximum Input Current	16 mA @ 144 VAC
Input Impedance	15 k Ω (50 Hz), 12 k Ω (60 Hz)
ON Voltage Level	> 70 VAC
OFF Voltage Level	< 20 VAC
Minimum ON Current	5 mA
Maximum OFF Current	2 mA
OFF to ON Response	< 40 mS
ON to OFF Response	< 40 mS
Status Indicators	Logic Side (8 points, green LED) Power Indicator (green LED)
Commons	2 (4 points/common) Isolated
Bus Power Required (24 VDC)	Max. 30mA (All Inputs On)
Terminal Block Replacement	ADC p/n C0-8TB
Weight	2.8 oz (80 g)

Equivalent Input Circuit



Input Module Temperature Derating Chart



ZipLink Pre-Wired PLC Connection Cables and Modules for CLICK PLC

11-pin connector cable
 ZL-C0-CBL11 (0.5 m length)
 ZL-C0-CBL11-1 (1.0 m length)
 ZL-C0-CBL11-2 (2.0 m length)



ZL-RTB20
 20-pin feed-through
 connector module



Power Budgeting

Power budgeting

There are two areas to be considered when determining the power required to operate a CLICK PLC system. The first area is the power required by the CLICK CPU, along with the internal **logic side** power that the CPU provides to its own I/O and any connected I/O modules that are powered through the CPU's expansion port, plus any device, such as a C-more Micro-Graphic panel, that is powered through one of the CPU's communication ports.

The second area is the power required by all externally connected I/O devices. This should be viewed as the **field side** power required. The field side power is dependent on the voltage used for a particular input or output device as it relates to the wired I/O point, and the calculated load rating of the connected device.

It is strongly recommended that the power source for the **logic side** be separate from the power source for the **field side** to help eliminate possible electrical noise.

Power Budgeting requires the calculation of the total current that the 24 VDC power source needs to provide to CLICK's **logic side**, and also a separate calculation of the total current required from all devices operating from the **field side** of the PLC system.

See the Power Budgeting example shown to the right, which includes tables listing the CLICK CPU and I/O module current requirements.

Power Budgeting Using the CLICK Programming Software

The following example shows the **logic side** current consumption as calculated in the CLICK Programming software. Based on the amperage rating of the power supply selected in the first column, your power budget is calculated by subtracting each consecutive module's power consumption from the total available power budget. If you exceed the maximum allowable power consumption the power budget row is highlighted in red.

Power budget row turns red if maximum allowable power consumption is exceeded for your power supply.



CLICK 24 VDC Power Supply
CO-00AC or CO-01AC



Other 24 VDC Power Supply
Example: PSP24-60S

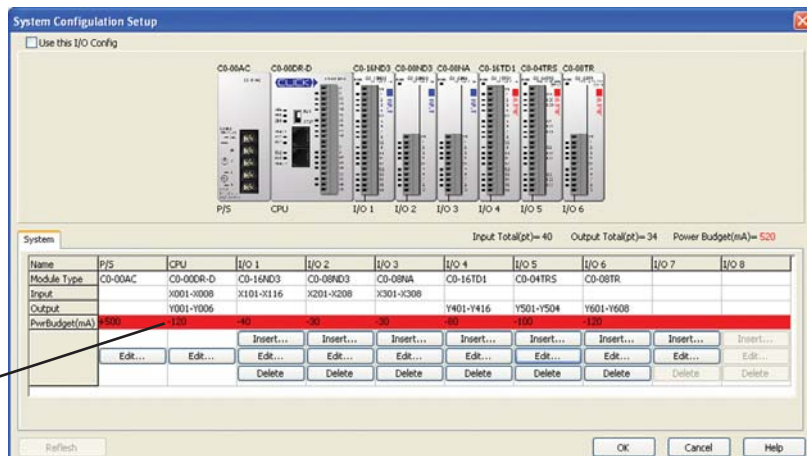
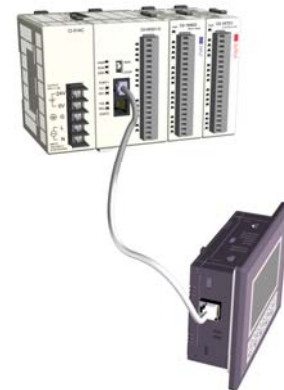
Current Consumption (mA)		
Part Number	Power Budget 24 VDC (logic side)	External 24 VDC (field side)
CPU Modules		
CO-00DD1-D	120	60
CO-00DD2-D	120	0
CO-00DR-D	120	0
CO-00AR-D	120	0
Input Modules		
CO-08ND3	30	0
CO-08ND3-1	30	0
CO-16ND3	40	0
CO-08NA	30	0

Current Consumption (mA)		
Part Number	Power Budget 24 VDC (logic side)	External 24 VDC (field side)
Output Modules		
CO-08TD1	50	15
CO-08TD2	50	0
CO-16TD1	80	100
CO-16TD2	80	0
CO-08TA	80	0
CO-04TRS	100	0
CO-08TR	100	0
C-more Micro-Graphic Panel		
All p/n	90	0

(Example)

Current Consumption (mA) Example		
Part Number	Power Budget 24 VDC (logic side)	External 24 VDC (field side)
CO-00DD1-D	120	60
CO-16ND3	40	0
CO-16TD1	80	100
C-more Micro	90	0
Total:	330	160 *

* Plus calculated load of connected I/O devices.





Five-second PLC wiring system

Cut your PLC wiring time down to minutes instead of hours

The **ZIPLink** wiring system eliminates the normally tedious process of wiring PLC I/O to terminal blocks. Simply plug one end of a **ZIPLink** pre-wired terminal block cable into your **CLICK** module and the other end into a **ZIPLink** connector module. It's that easy. **ZIPLinks** use half the space, at a fraction of the total cost of terminal blocks.

ZIPLinks are available in a variety of styles to suit your needs, including feedthrough connector module*. **ZIPLinks** are available for all **CLICK** CPU modules and all discrete input and output modules.

Note: only the feedthrough module **ZIPLink currently available.*

Specify your **ZIPLink** system

Use the Compatibility Matrix table below:

Step 1	Locate the CLICK CPU module or I/O module part number.
Step 2	Locate compatible connector module type.
Step 3	Select the cable length by replacing the # symbol with: Blank = 0.5m, -1 = 1.0m, -2 = 2.0m

ZipLink Wiring System Compatibility Matrix for CLICK PLCs			
	Step 2: Connector Module Type		Feedthrough Module
	Step 1: I/O unit	Number of Terminals	Step 3: Cables
CPU Module	CO-00DD1-D	20	ZL-C0-CBL20#
	CO-00DD2-D	20	ZL-C0-CBL20#
	CO-00DR-D	20	ZL-C0-CBL20#
	CO-00AR-D	20	ZL-C0-CBL20#
I/O Module	CO-08ND3	11	ZL-C0-CBL11#
	CO-08NA	11	ZL-C0-CBL11#
	CO-08TD1	11	ZL-C0-CBL11#
	CO-08TD2	11	ZL-C0-CBL11#
	CO-08TR	11	ZL-C0-CBL11#
	CO-08TA	11	ZL-C0-CBL11#
	CO-16ND3	20	ZL-C0-CBL20#
	CO-16TD1	20	ZL-C0-CBL20#
	CO-16TD2	20	ZL-C0-CBL20#
	CO-04TRS*	20	ZL-C0-CBL20#
	*Note: The CO-04TRS relay output is derated to 2A per point max. when used with the ZipLink wiring system		

