

APS4 Inductive Proximity Sensors



APS4-12S-E-D
APS4-12S-E2-D

APS4-12M-E-D
APS4-12M-E2-D

Compact 12 x27 mm plastic – DC

- 4 models available
- Compact polycarbonate housing; comes with mounting plate
- High-frequency oscillation type
- DC 3-wire, NPN or PNP / N.O.
- Axial cable
- LED indicator
- IP67 rated

Compact Rectangular DC Prox Selection Chart							
Part Number		Sensing Range	Housing	Output State	Logic	Connection	Dimensions
APS4-12M-E-D	<--->	4.0mm (0.157in)	Unshielded	N.O.	NPN	2m (6.5') axial cable	Figure 1
APS4-12M-E2-D	<--->				PNP		Figure 1
APS4-12S-E-D	<--->				NPN		Figure 2
APS4-12S-E2-D	<--->				PNP		Figure 2

Specifications	
Type	Unshielded
(Sn) Nominal Sensing Distance	4mm (0.157in)
Material Correction Factor	*See Material Influence table #1
Operating Voltage	10-30VDC
Load Current	≤50mA
Current Consumption	≤10mA
Voltage Drop	≤1.0VDC
Output Type	NPN or PNP
Leakage Current	≤0.1mA
Switching Frequency	200Hz
(tv) Time Delay Before Availability	5ms
Temperature Range	-10° to +50° C (14° to 122° F)
Protection Degree (DIN 40 050)	IEC IP67
LED Indicators	Displays operation status
Housing, Sensing Face Material	Polycarbonate
Weight	1.41oz. (40g)

*See Material Influence table #1 on page 17-53

Dimensions

All dimensions in mm

Figure 1

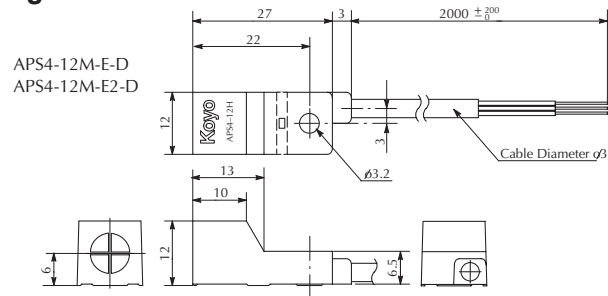
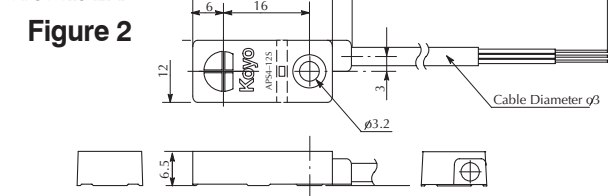
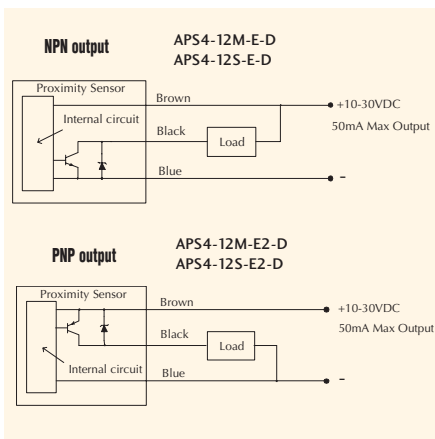


Figure 2



Wiring diagrams



Mounting plate

